

1146 La Tierra Plaza Office Rental

1146 W. State Route 89A ~ Sedona AZ 86336

Currently Available: Suite C-3

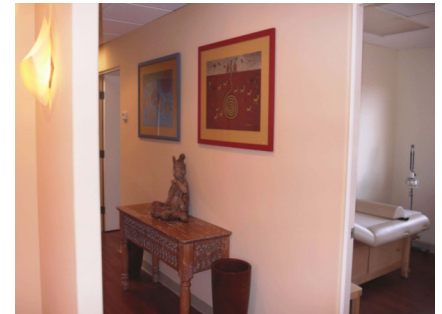


1,396 SQ FT ~ MEDICAL OR PROFESSIONAL OFFICE ON HWY 89A ~ COMPETITIVELY PRICED

A golden opportunity to relocate, expand or create a new business in the highly sought area of Sedona, AZ; where the quality of life is an important factor in choosing your home and business. Currently designed for a "turn-key medical/professional, office with:



- Outstanding tenant improvements, including built in cabinetry through entire suite
- Spacious reception area with lots of windows
- Business office with lots of built in cabinets and desk space
- Centrally located work/nurse station with large separate walk-in storage closet
- Furniture negotiable



YOUR SUCCESS IS OUR SUCCESS

1146 La Tierra Plaza Features:

- ~ Award-Winning Architectural Landscape Design
- ~ Exceptional Views of the Sedona Red Rocks
- ~ Covered Tenant Parking and Surplus Parking
- ~ All Offices Have Private Bathrooms
- ~ Personal Heating and Air Conditioning Units
- ~ Highway Frontage; Located on the Northwest Corner of SR 89A and North Airport Road with Eight Executive Offices
- ~ Building Size of Plaza: 16,500 Square Feet
- ~ Max. Office Size: 4,600 Sq Ft; Min. Office Size: 500 Sq. Ft.
- ~ Convenient On-Site Property Management



M & M Property Management Group, LLC

1120 W. State Route 89A, Suite A2 ~ Sedona AZ 86336

SedonaOfficeRentals.com ~ 928-282-9748 ~ mmsedona@gmail.com